

The Utilities Board

City of Muscle Shoals

Phone (205) 386-9260

P.O. Box 2648
2120 East Second Street
MUSCLE SHOALS, ALABAMA 35662

Fax (205) 386-9261

February 18, 1992

Dear Water & Sewer User:

Please find enclosed a resolution from the GOVERNING BOARD of The Utilities Board of the City of Muscle Shoals, regarding the dumping of fats, oils and nonsoluble substances into the sewer lines of The Utilities Board of the City of Muscle Shoals.

Your attention is called to this resolution and your attention is specifically directed to the fact that if your business does not have a grease trap which is adequately visible and available for inspection and which can be inspected on a regular basis to insure that your business is not dumping grease, fats and other nonsoluble substances into the sewer lines of The Utilities Board of the City of Muscle Shoals then sewer services to your business will be terminated and the health department of the State of Alabama will be notified of such termination.

We regret the need for these measures, however, the practices of many businesses have resulted in severe damage to the sewage lines of The Utilities Board of the City of Muscle Shoals and also to our treatment plant.

Employees of The Utilities Board of the City of Muscle Shoals will within the next sixty (60) days be visiting your business to inspect the grease traps which you have to prevent grease, oil and other nonsoluble substances from being transmitted into the sewage lines of The Utilities Board of the City of Muscle Shoals.

Should you have any questions regarding this or any other matter involving your sewage or water, please do not hesitate to contact me.

Yours very truly


Rodger Burcham, Manager

RESOLUTION

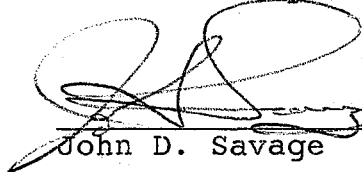
BE IT RESOLVED THE UTILITIES BOARD OF THE CITY OF MUSCLE SHOALS, ALABAMA as follows:

1) That existing and future restaurants and other business establishments receiving services of sewage treatment and placing sewage into the sewage lines of the Utilities Board of the City of Muscle Shoals are creating considerable problems in both the clogging of the sewage lines, movement of sewage and waste through the sewage lines and treatment of said sewage at the treatment plant by the dumping of large portions of fats, oils and other nonsoluble materials into such lines which could be removed from the sewage lines and sewage treatment plant of the Utilities Board of the City of Muscle Shoals by such restaurants and other businesses having adequate grease traps to collect such grease, fat and other nonsoluble. Such practices have in the past caused considerable expense to the Utilities Board of the City of Muscle Shoals in the maintenance of its lines and equipment and the refurbishing of its lines and equipment and treatment plant.

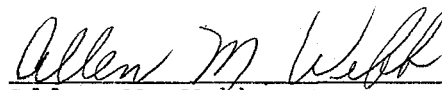
2) That commencing sixty (60) days from the date hereof all restaurants and other businesses receiving services of sewage from the Utilities Board of the City of Muscle Shoals and dumping fats, oils and other nonsoluble materials into the sewage lines of the Utilities Board of the City of Muscle Shoals must have visible for inspection an adequate grease trap to prevent fats, oils and other nonsoluble materials from being placed in the sewage lines of the Utilities Board of the City of Muscle Shoals.

3) That any restaurant and other businesses which sixty (60) days from the date hereof fails to exhibit to agents, servants, and employees of the Utilities Board of the City of Muscle Shoals such grease traps and fails to provide such grease traps in a working order to insure that no further fats, oils or other nonsoluble materials are placed in the sewage lines of the Utilities Board of the City of Muscle Shoals will have their services of sewage terminated by the Utilities Board of the City of Muscle Shoals and the State Health Department and the local State health department representatives will be notified of the termination of such sewage services.

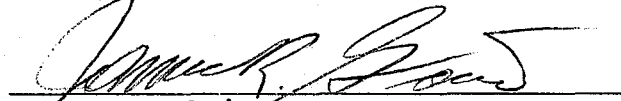
ADOPTED AND APPROVED this the 13th day of June, 1991.




John D. Savage



Allen M. Webb



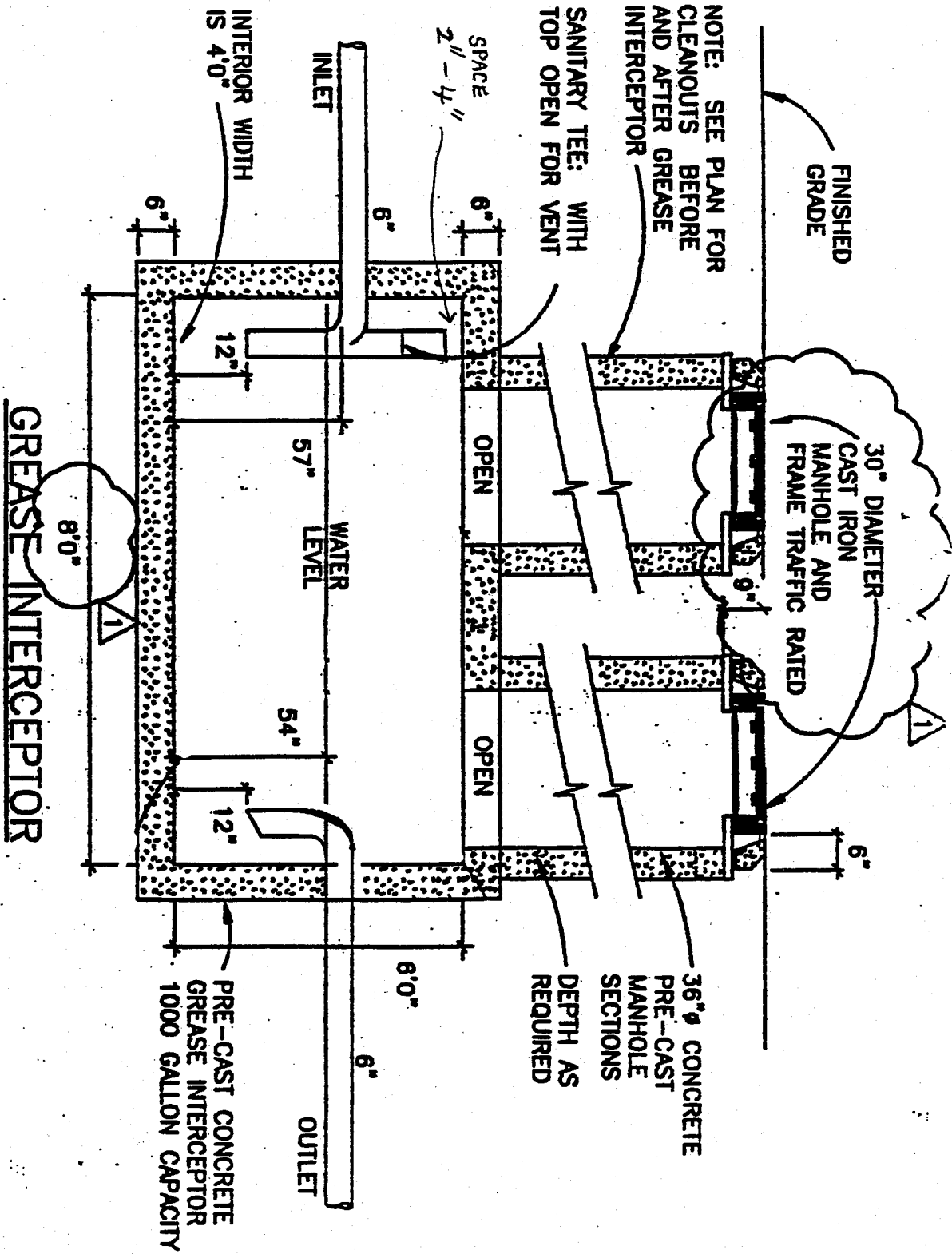
James R. Goins



Jessie F. Homan



Charles R. Mitchell



NOTE:

STRENGTH DESIGN SHALL BE IN ACCORDANCE TO H-20 BRIDGE LOADING. CONCRETE SHALL BE 4500 PSI. ACTUAL DETAILS AND DIMENSIONS MAY VARY DEPENDING ON LOCAL FABRICATORS CRITERIA. CONTRACTOR SHALL OBTAIN APPROVAL AND COMPLY WITH ALL REQUIREMENTS OF LOCAL OFFICIALS PRIOR TO INSTALLATION

